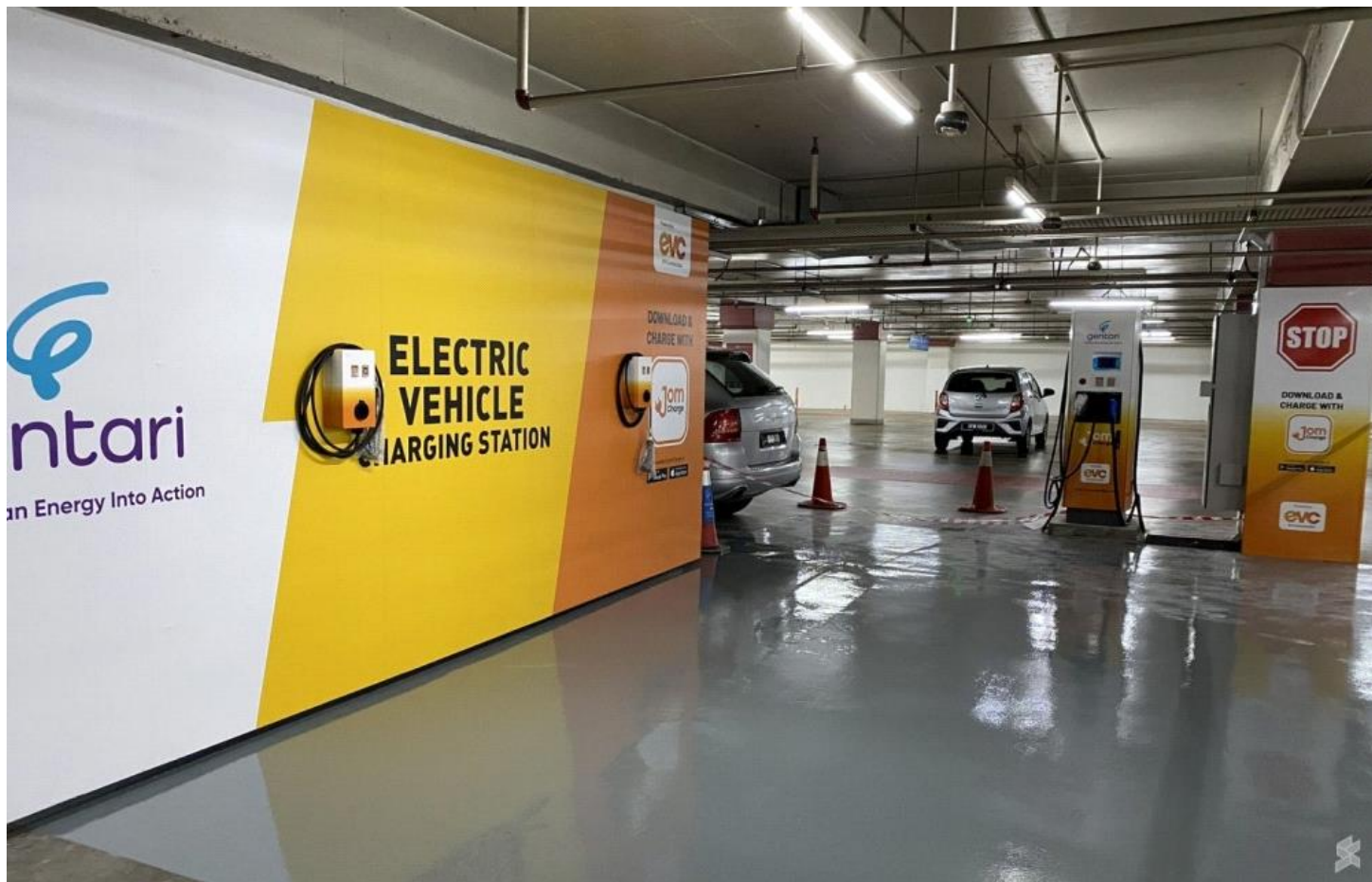


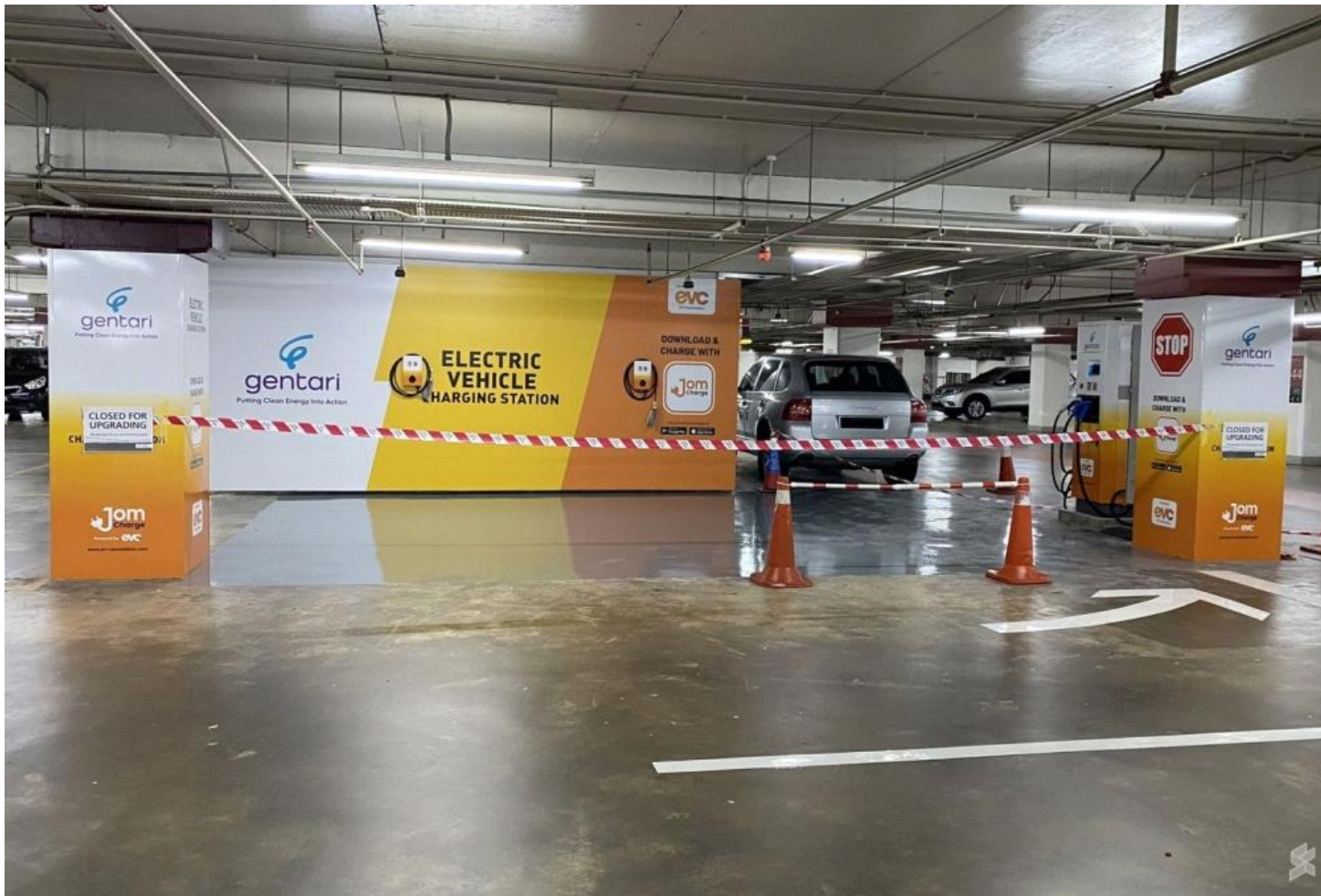
Mid Valley Megamall is finally getting its EV charging station soon – eNews Malaysia | eNews Malaysia

Clipped from: <https://enewspapermy.com/entertainment/mid-valley-megamall-is-finally-getting-its-ev-charging-station-soon-eneews-malaysia/>



KUALA LUMPUR, Sept 15 — With extra electrical automobiles (EV) hitting Malaysian roads, there's positively a have to deploy extra EV chargers not simply at interstate freeway stops but in addition at locations equivalent to buying malls. It seems that Mid Valley City is embracing the present transition to EVs as there are AC and DC chargers being deployed at Mid Valley Megamall's basement carpark.

The new EV charging station by Gentari and JomCharge is positioned close to the Southcourt travelator at (round Pillar A43) Level P2, Mid Valley Megamall carpark. For quick charging, there's an ABB Terra 54 DC charger which may push as much as 50kW. This unit has a complete of three nozzles which embody Type-2 AC in addition to CCS2 and CHAdeMO DC connectors. This station additionally has two AC cost factors which is nice if you happen to plan to go away your EV for a few hours.



This single DC and two AC charging bay setup is much like its different EV Charging station location positioned at P2, The Gardens Mall. It additionally will get one ABB DC Charger and two AC cost factors. Take notice that these Gentari and JomCharge chargers are nonetheless not out there on the time of writing.





If you might want to cost your EV at round Mid Valley, there are presently three 11kW AC chargers at Menara Southpoint. Located close to pillar S2 13 at Level P1, these chargers are managed by ChargeEV and so they value RM0.80 per kWh. If your EV can settle for 11kW, you will get 22kWh of cost in about two hours for RM17.60.



Once all websites are operational, there might be a complete of 9 charging factors at Mid Valley City which incorporates 2 DC and seven AC cost factors. The subsequent nearest charger is positioned at (Pillar C26) Level B1, KL Eco City which has two 22kW AC chargers deployed by ChargeEV.

As all the time, these charging bays are for EV charging solely. If your car has accomplished its charging, it is best to transfer it in order that others can prime up their batteries.

In case you missed it, ChargeSini not too long ago deployed 4 DC chargers at The Curve whereas IPC Shopping Centre has deployed 4 AC chargers. Pavilion Kuala Lumpur is presently the house to Malaysia's first Tesla Supercharger location with a complete of 8 DC quick charging stalls. Soon, it will likely be joined by extra EV chargers deployed by Shell Recharge simply subsequent door. — eNM